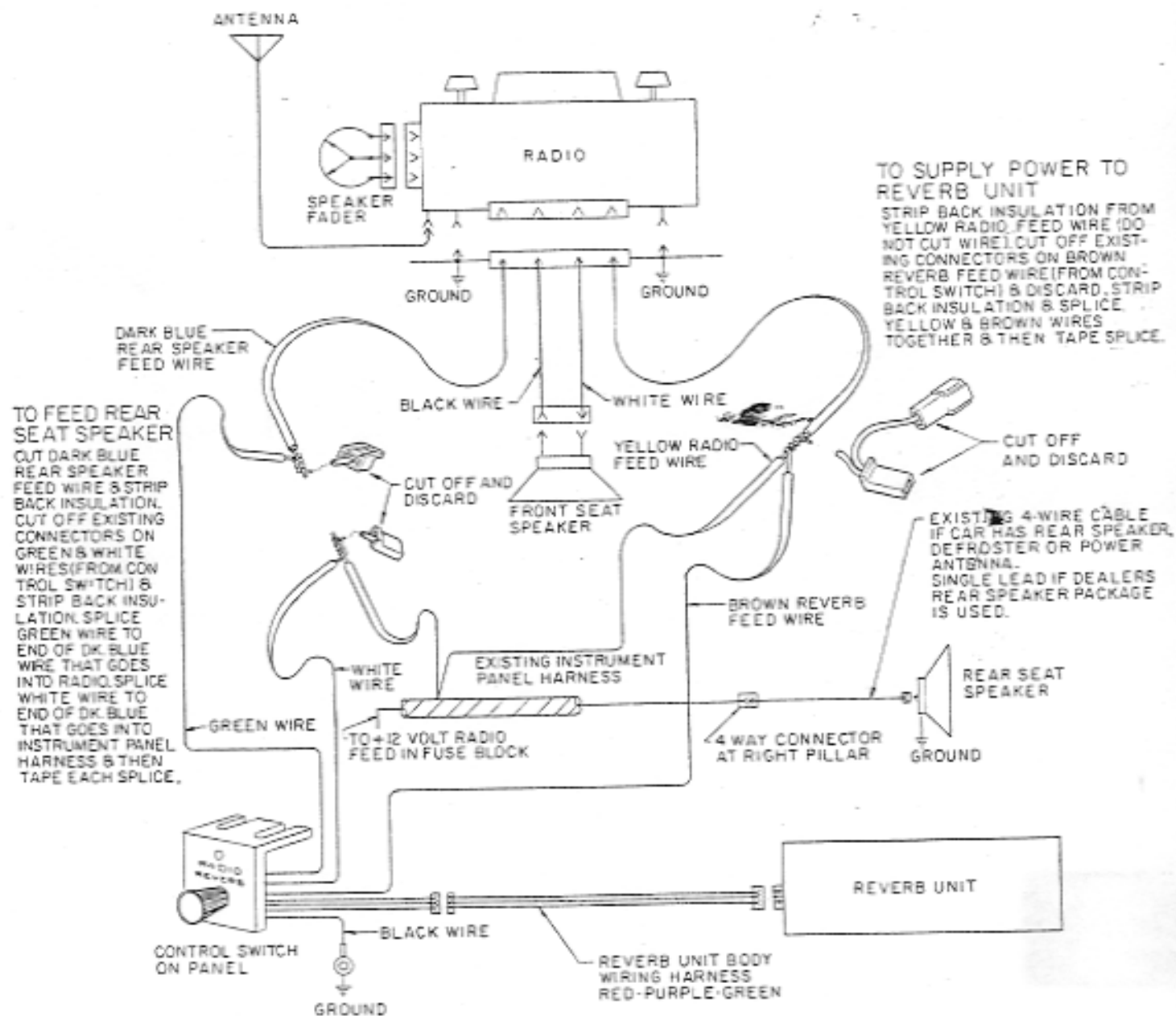


# BUICK

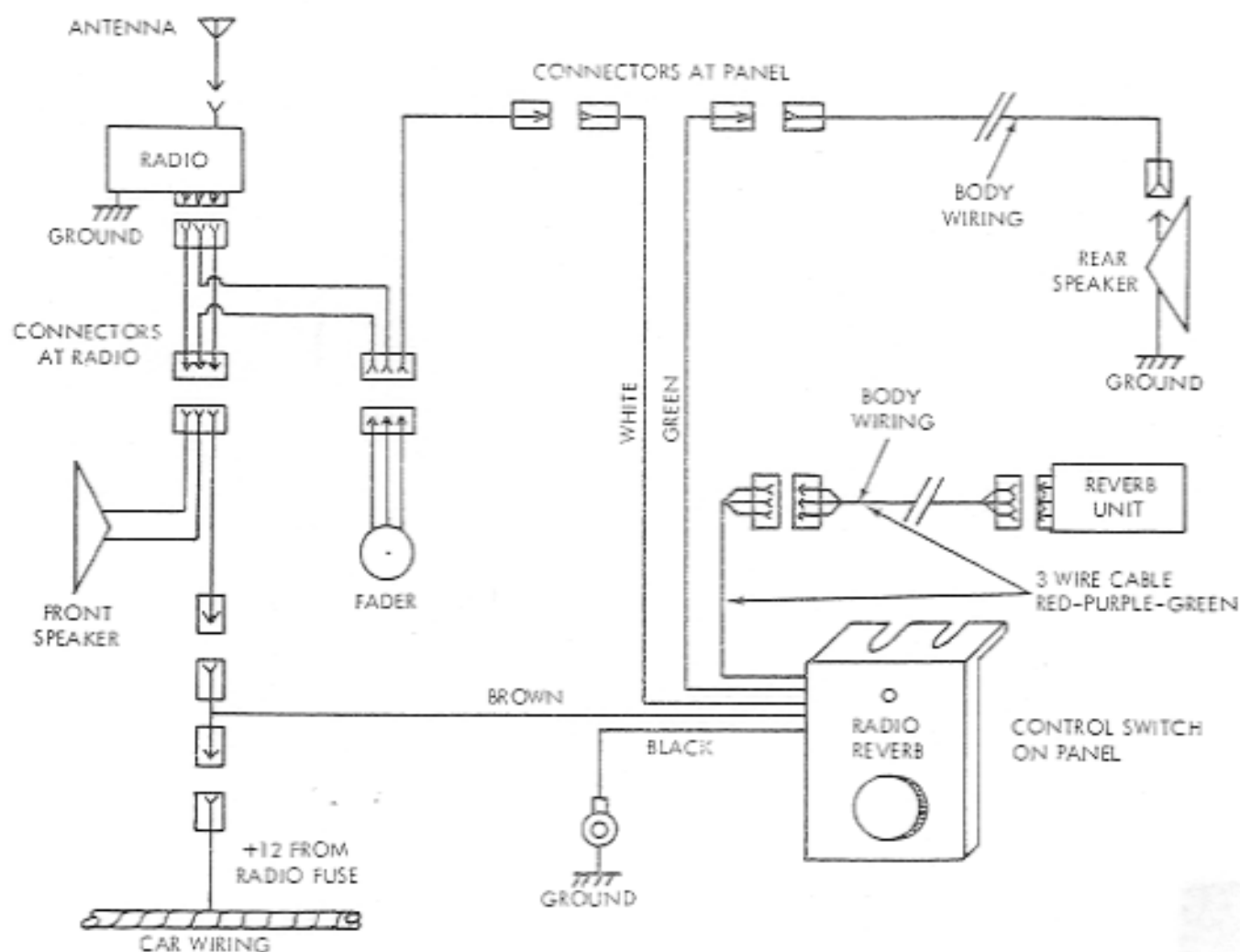
## *Installation Instructions*

### REVERBERATION UNIT WIRING DIAGRAM FOR 1965 LE SABRES, WILDCATS & ELECTRAS

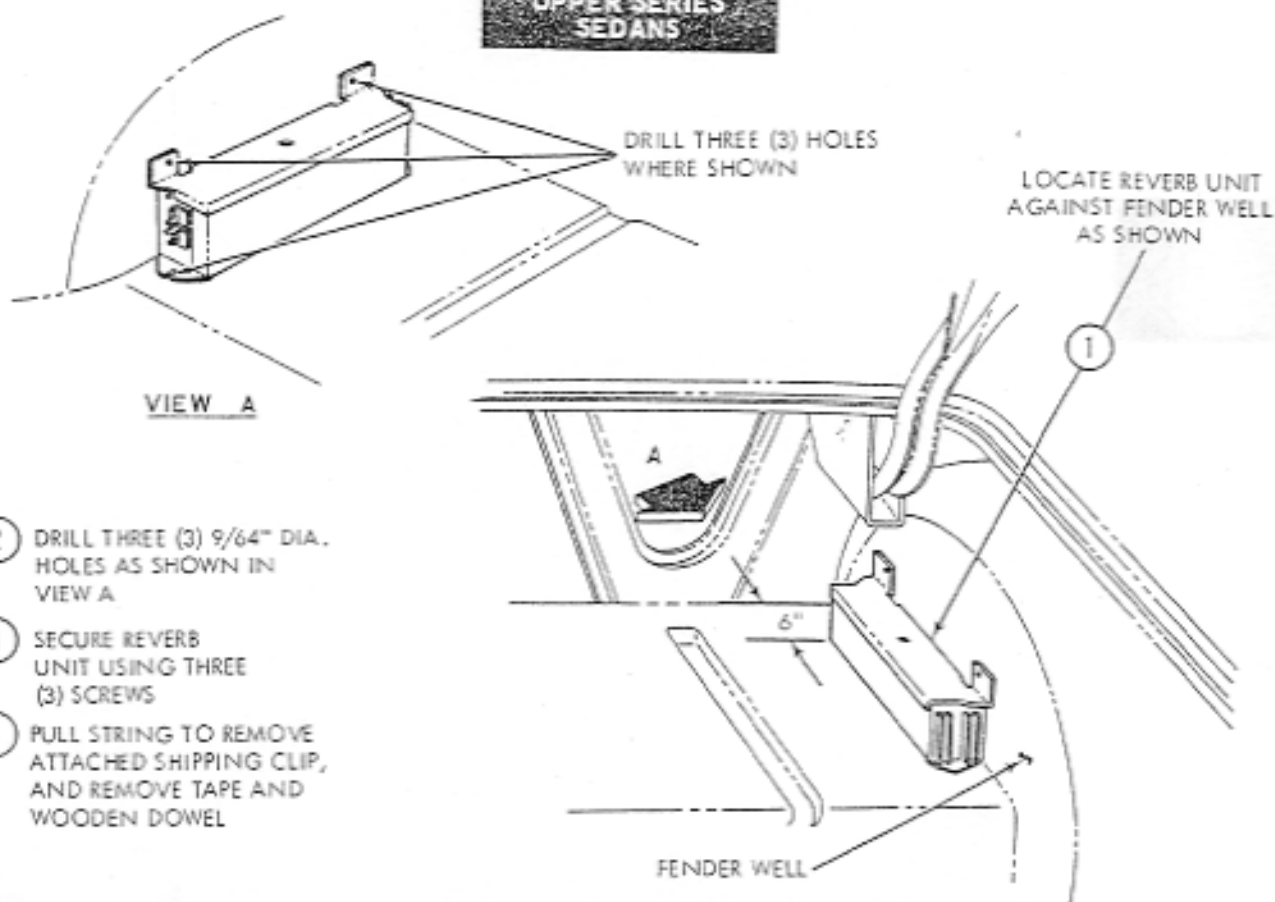


SCHEMATIC WIRING  
DIAGRAM

1964 - 1965  
SPECIAL and RIVIERA  
MODELS

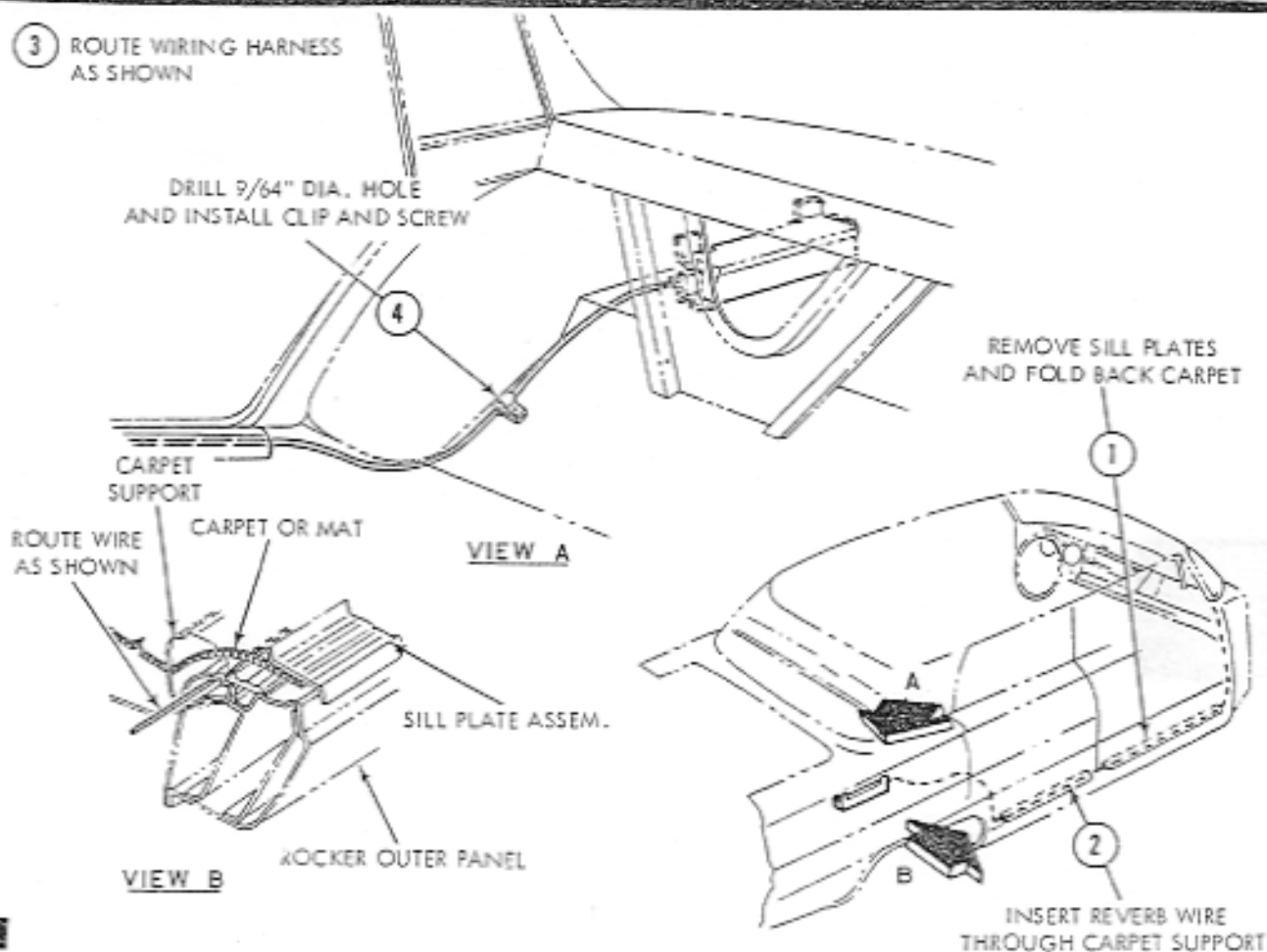


**UPPER SERIES  
SEDANS**

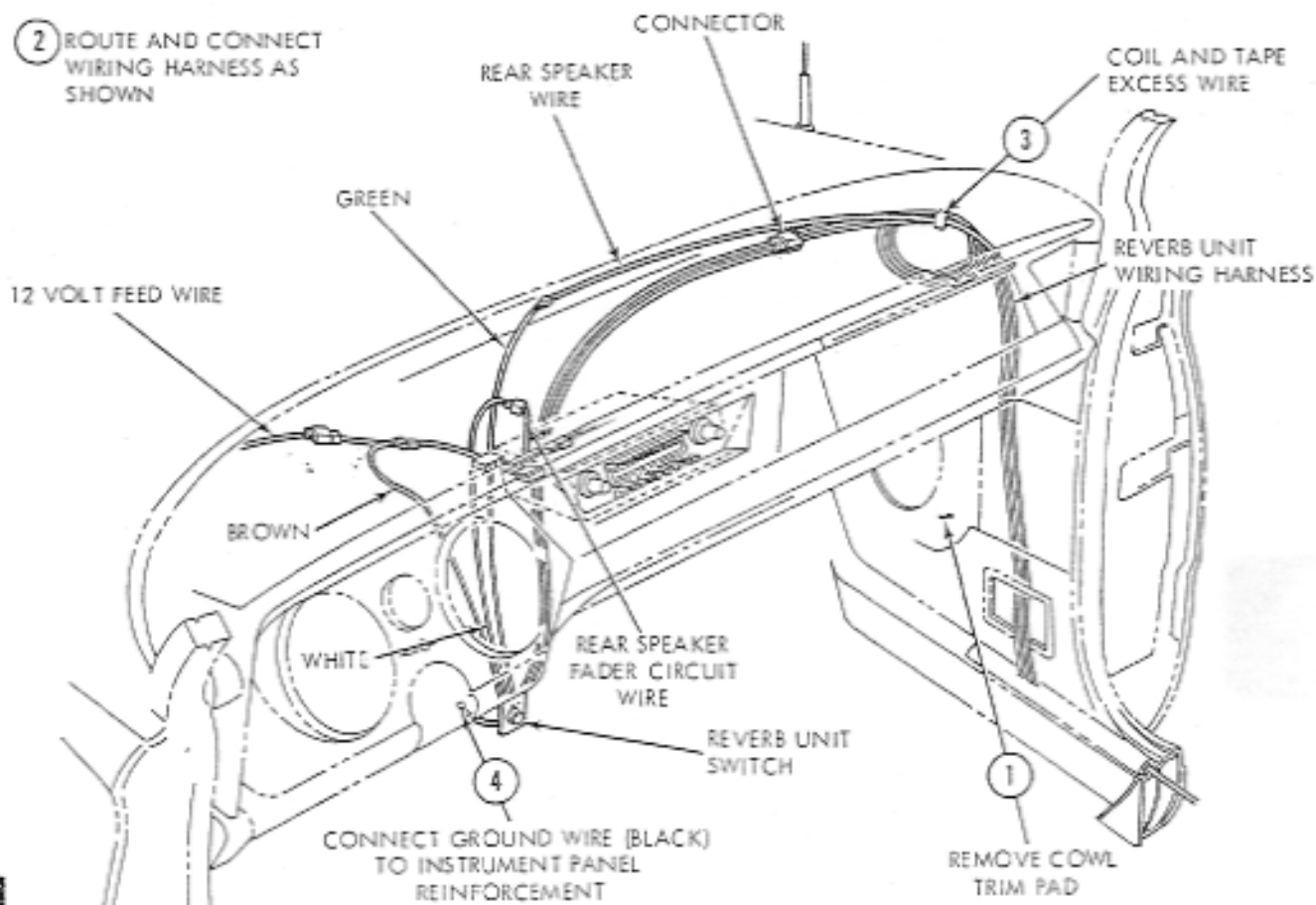
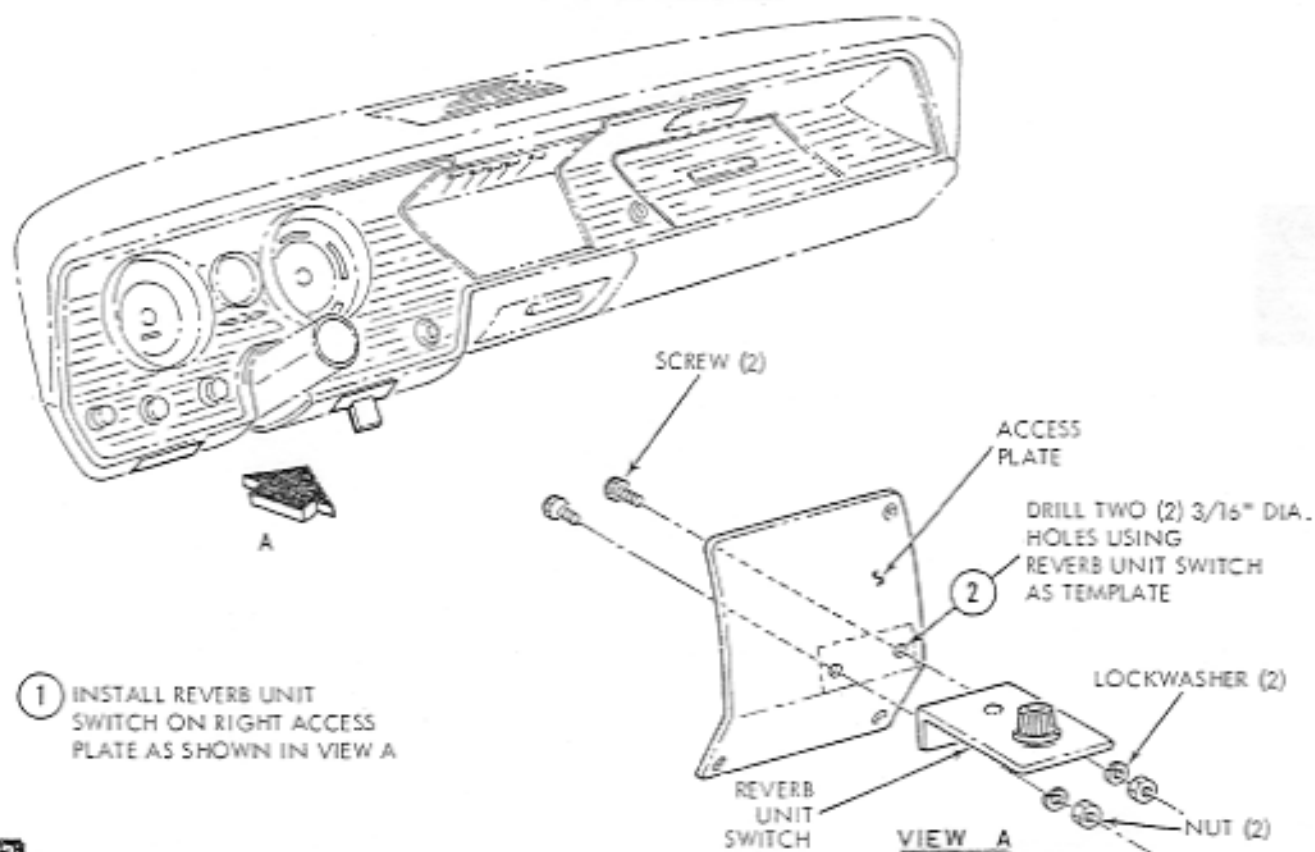


- 2 DRILL THREE (3) 9/64" DIA. HOLES AS SHOWN IN VIEW A
- 3 SECURE REVERB UNIT USING THREE (3) SCREWS
- 4 PULL STRING TO REMOVE ATTACHED SHIPPING CLIP, AND REMOVE TAPE AND WOODEN DOWEL

- 3 ROUTE WIRING HARNESS AS SHOWN



UPPER SERIES  
SEDANS

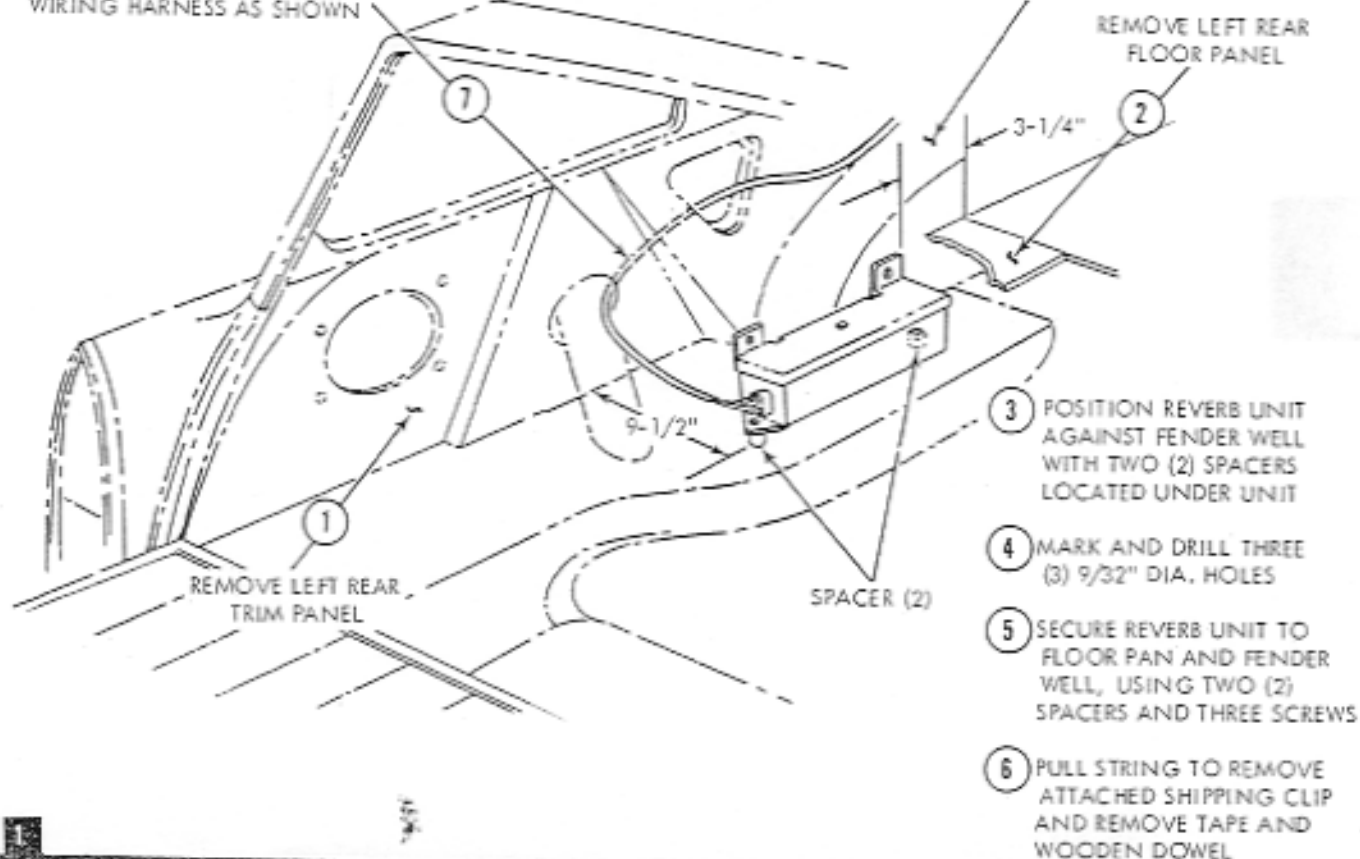


**UPPER SERIES  
STATION WAGONS**

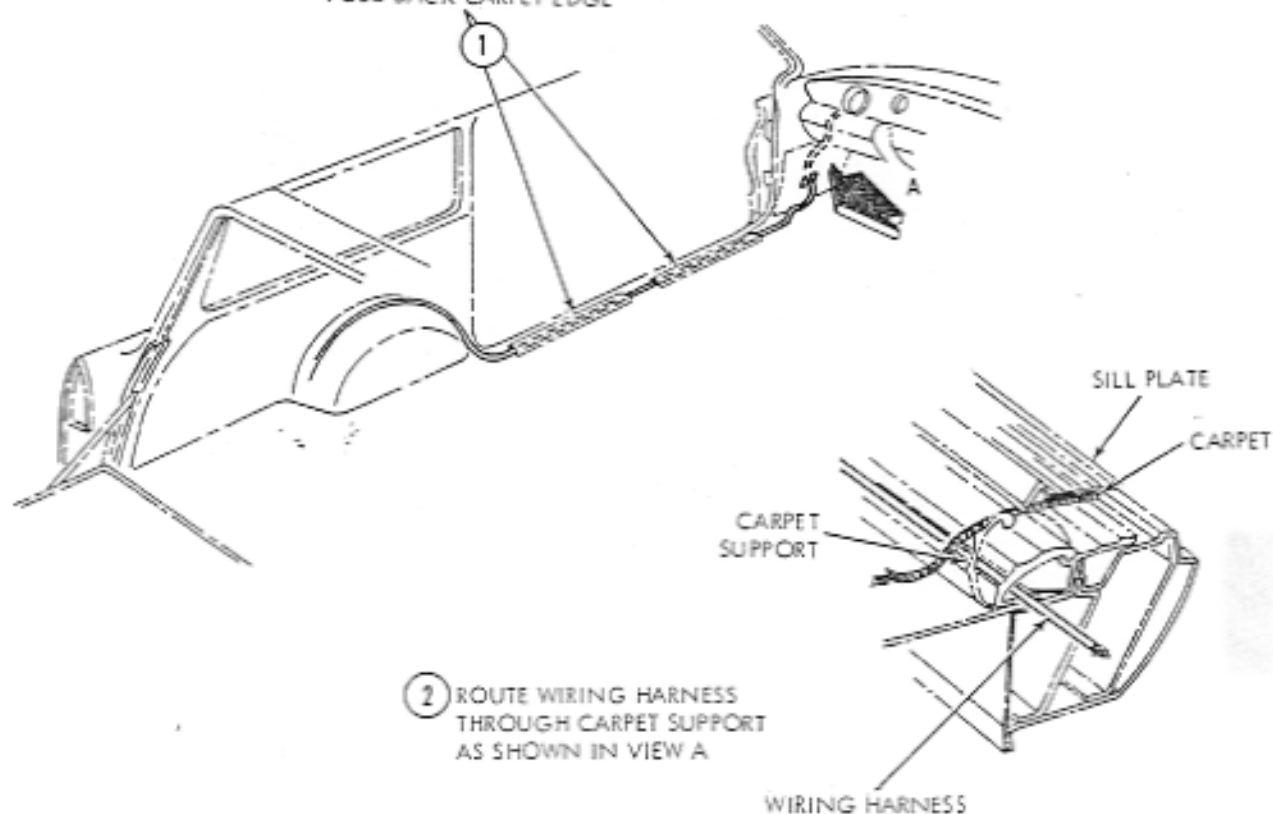
CONNECT AND ROUTE  
WIRING HARNESS AS SHOWN

FENDER WELL

REMOVE LEFT REAR  
FLOOR PANEL

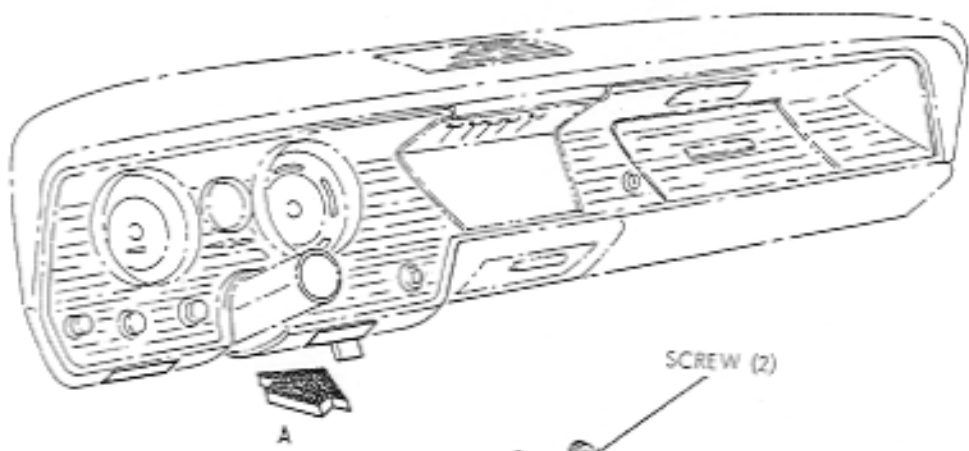


REMOVE SILL PLATES  
FOLD BACK CARPET EDGE

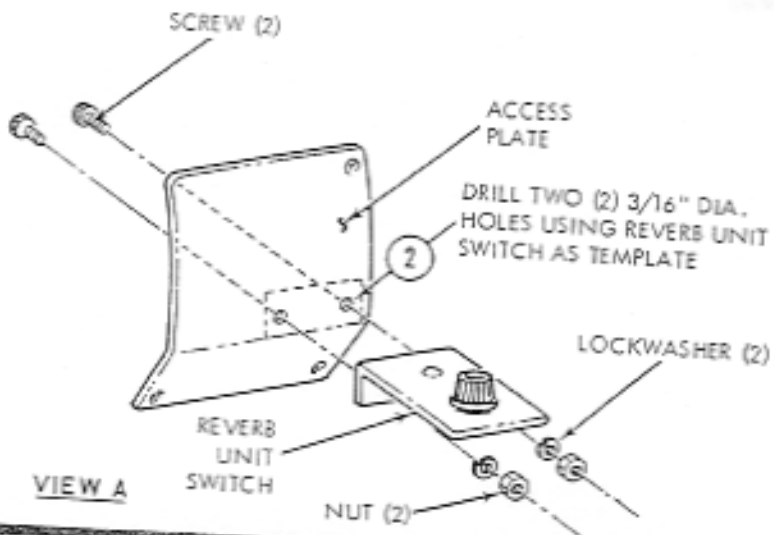


VIEW A

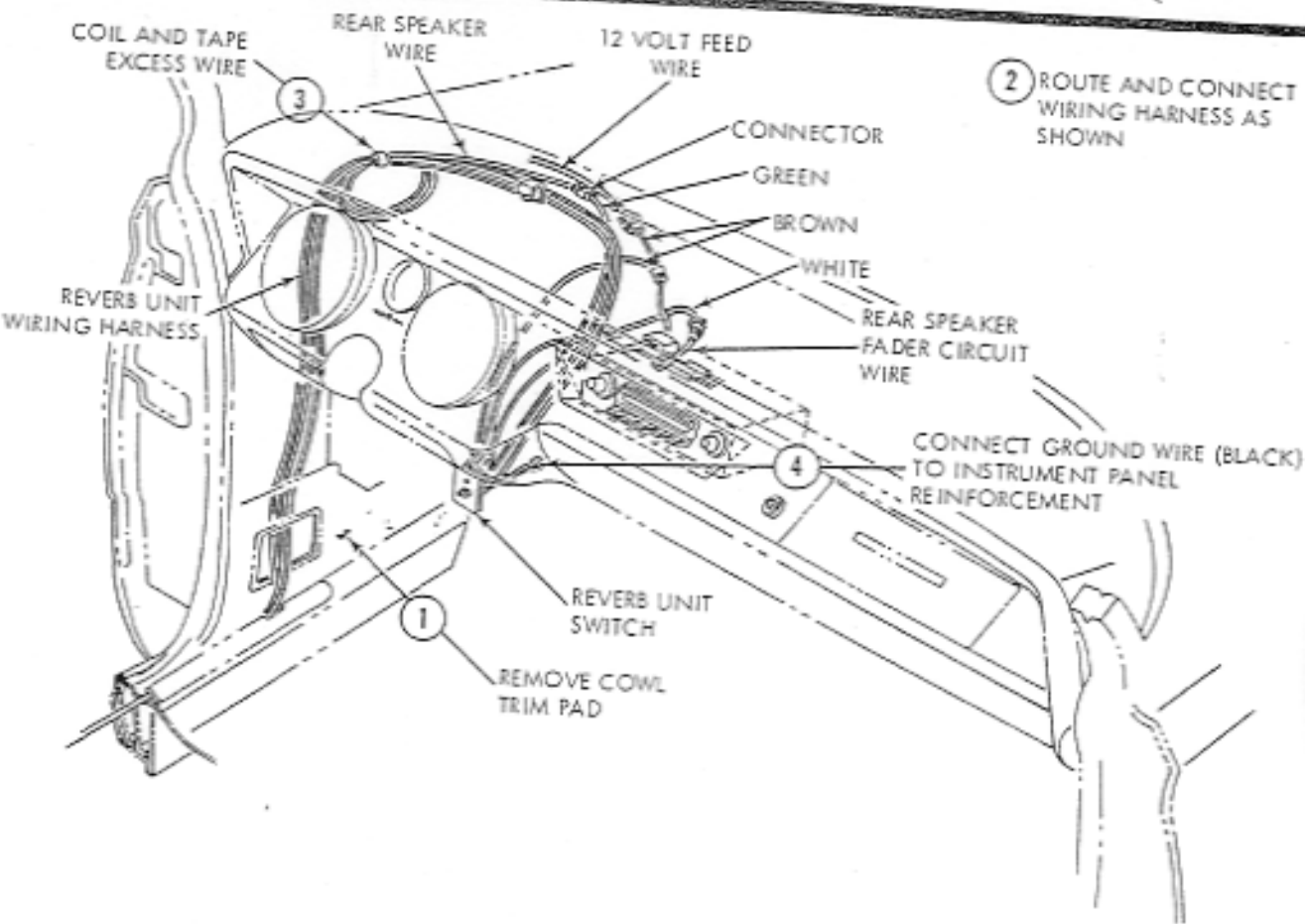
**UPPER SERIES  
STATION WAGONS**



1 INSTALL REVERB UNIT SWITCH ON RIGHT ACCESS PLATE AS SHOWN IN VIEW A



VIEW A



2 ROUTE AND CONNECT WIRING HARNESS AS SHOWN

1 REMOVE COWL TRIM PAD

4 CONNECT GROUND WIRE (BLACK) TO INSTRUMENT PANEL REINFORCEMENT

3 COIL AND TAPE EXCESS WIRE

REAR SPEAKER WIRE

12 VOLT FEED WIRE

CONNECTOR

GREEN

BROWN

WHITE

REAR SPEAKER FADER CIRCUIT WIRE

REVERB UNIT WIRING HARNESS

REVERB UNIT SWITCH

**UPPER SERIES  
CONVERTIBLES**

LOCATE REVERB UNIT  
AGAINST FENDER WELL  
AS SHOWN

DRILL THREE (3) HOLES  
WHERE SHOWN

VIEW A

FENDER WELL

7-1/2"

INSERT WIRING HARNESS  
THROUGH HOLE IN FLOOR  
AND CONNECT TO REVERB UNIT

- 2 DRILL THREE (3) 9/64" DIA.  
HOLES AS SHOWN IN  
VIEW A
- 3 SECURE REVERB UNIT  
USING THREE (3) SCREWS
- 5 PULL STRING TO REMOVE  
ATTACHED SHIPPING CLIP  
AND REMOVE TAPE AND  
WOODEN DOWEL

- 1 REMOVE REAR SEAT CUSHION

PULL WIRING HARNESS DOWN FROM  
BEHIND REAR SEAT BACK REST

REMOVE SCREWS FROM  
RIGHT ARM REST PANEL

REMOVE SILL PLATE

ROUTE WIRING HARNESS ACROSS  
FLOOR AND UNDER  
EDGE OF ARM REST

ROUTE WIRING HARNESS  
THROUGH CARPET SUPPORT

2

